

HAVE IT MADE FEATURE WALL INSTALLATION INSTRUCTIONS



WHAT'S INCLUDED: (4) graphics, template, hardware and fasteners



TOOLS NEEDED: drill, 1/4" drill bit, level, painter's tape, Philips bit



Use tape to apply template to wall in desired location. Make sure it's level.

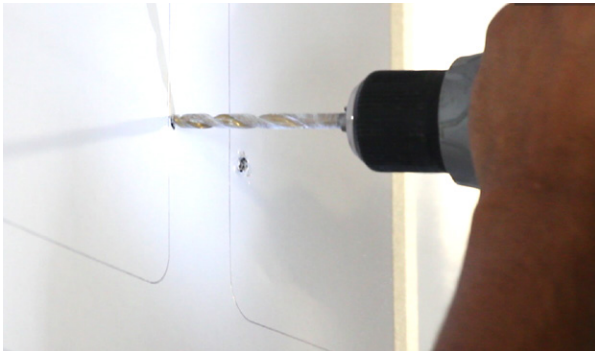


Drill holes through indicated areas to match studded graphics.

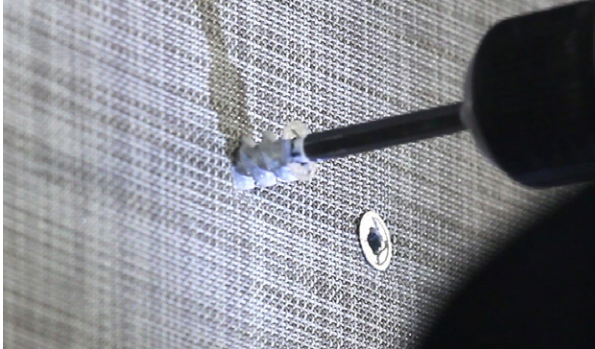


WANT TO WATCH AN INSTALL VIDEO?
Scan this code with your phone:

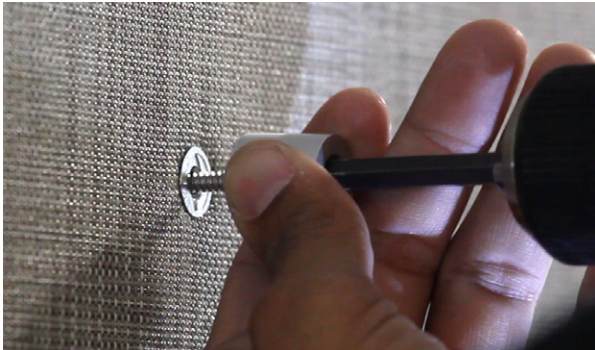




Pre-drill holes for acrylic standoffs.



Wall anchors for drywall mounting are included for standoffs that don't fall on wood studs.



The screw holds the barrel of the standoff to the wall.



After installing the standoff barrels, sandwich the acrylic pieces in between the barrels and the caps.



Install the dimensional lettering by pressing the studs into the holes made with the 1/4" drill

QUESTIONS? MISSING OR BROKEN PIECES? Please contact cmhmarket@highresolutions.com for help.