



HouseSmart®

INSTALLATION INSTRUCTIONS Overview Wall

These instructions will walk you through how to install your HouseSmart Overview Wall. Use this QR code to watch an installation video for these graphics.



TOOLS YOU'LL NEED:

- Drill
- 5/32" drill bit
- 1/8" drill bit
- 5/32" Allen wrench/bit
- Level
- Measuring tape
- Masking or painters tape

WALL OUTLET REQUIRED BEFORE INSTALLATION:

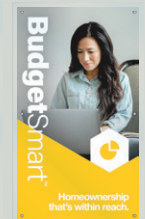
Your HouseSmart Icon includes led lighting that provides an energy efficient halo lit effect around the hexagon shape. You will need to have an electrician install a standard outlet before you install these graphics, if your office doesn't already have the outlet installed upon delivery. Please refer to the last page of this document for specs on placement of your outlet.

1

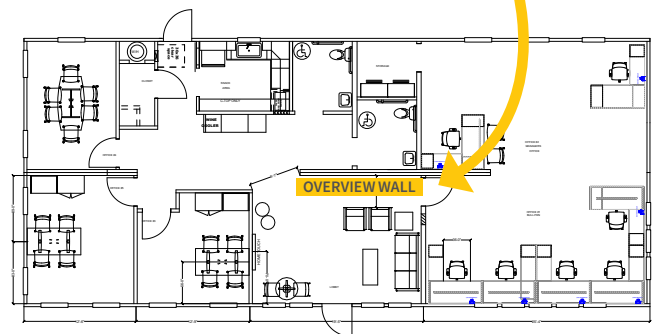
Confirm Measurements



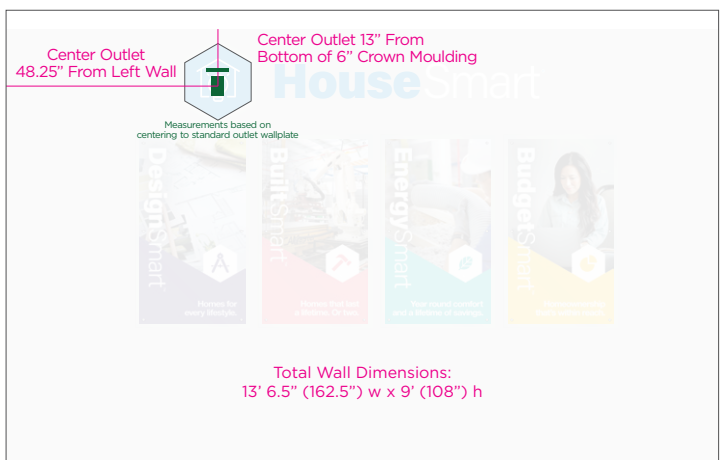
HouseSmart®



Installation Location



*Placement & measurements may vary in remodeled offices



Start by finding the center of your wall. The wall should be 162 inches wide by 108 inches tall.

Your electrical outlet is installed 48.25 inches from the left and 14 inches from the ceiling.

(If installing in a remodeled office your measurements may vary speak with Retail Marketing for custom measurements for your location)

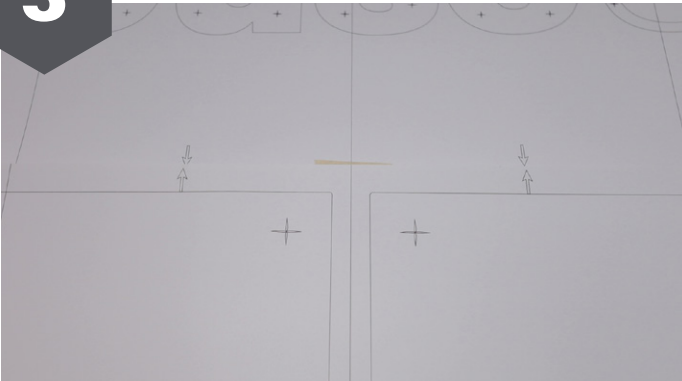
2**Position Templates**

Center the top graphic template using the electrical outlet position as your guide.

The top of the template should:

- butt up against the bottom of your crown moulding
- be roughly centered on wall
- the hexagon shape completely covering up the outlet.

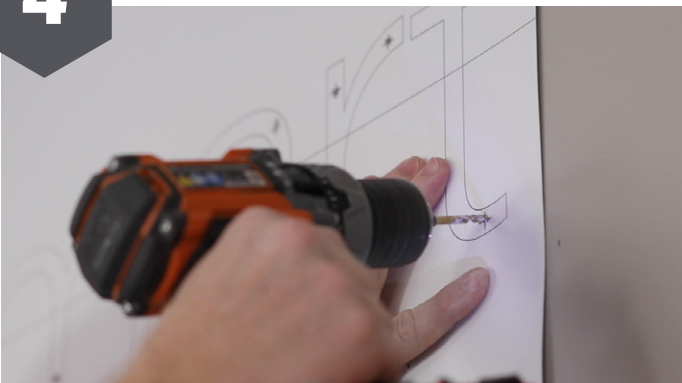
Once your template is in the right position, use masking or painters tape to secure it in place. Make sure template is flat against the wall.

3**Confirm Template Position**

Before installing the top graphic, tape up your lower template using the common guide lines to ensure correct positioning.

The two templates should butt up against each other.

With your templates installed, step back and look things over before drilling any holes. If everything looks centered and level, gather your tools to complete the installation.

4**Drill Holes**

Starting with a 5/32" drill bit, drill through each of the 37 stud markers on the top graphic.

Switch to a 1/8" drill bit and pre-drill the holes at the center of each of the 24 crosshairs on the bottom graphic.

The registered trademark symbol will be attached to the wall using foam tape and should be done while the template is in place. Remove the backing from the registered trademark symbol and use the template to apply to the wall.

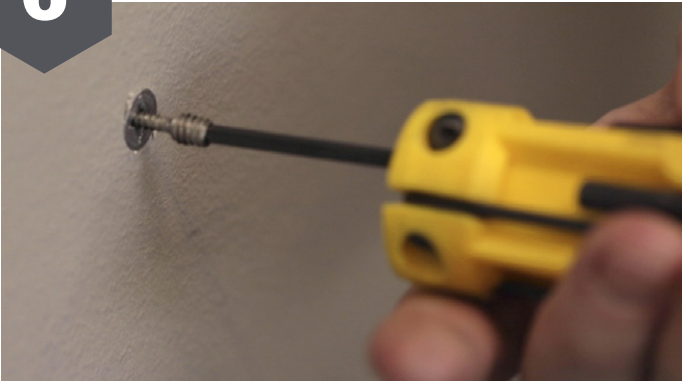
After all the holes are drilled and the registered trademark symbol is in place, you can take down and discard both templates.

5**Install HouseSmart Logo**

Before installing the HouseSmart lettering and Icon, slide the 1.5" spacer sleeves over each stud to keep the graphics from being flush against the wall.

Starting with the hexagon icon, remove the protective mask from the graphic, plug the cable into the outlet, and press into the pre-drilled holes. Use a fist to gently seat to the wall.

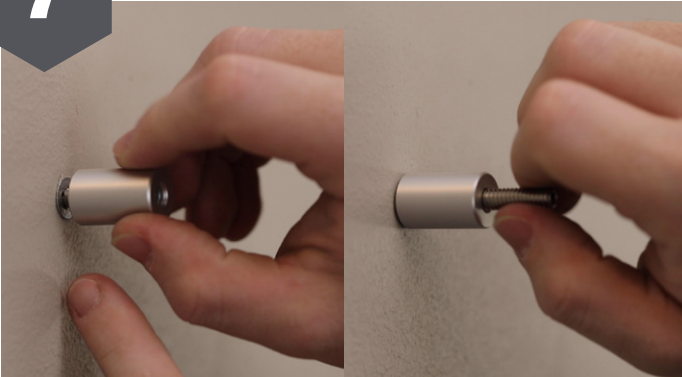
Continue with each letter (or letter set) by first removing the protective mask, pressing into the pre-drilled holes, and using a fist to gently seat to the wall.

6**Install Wall Anchors & Screws**

The holes you pre-drilled in the lower portion of the template will be used to attach aluminum stand-off hardware for the printed graphics.

Unless you're drilling into a wall stud, be sure to install the provided wall anchors into these pre-drilled holes. If drilling into a stud you'll be screwing the special-threaded rod screws directly into the wall and stud with an allen wrench.

Attach the special threaded rod screws to wall or the anchors using a 5/32" Allen bit .

7**Install Barrels & Threaded Rods**

By hand, attach each barrel to the wall.

After all the barrels are installed, screw the additional threaded rod into the barrel. Leave about 5/8" sticking out.

8**Hang Printed Graphics**

Now hang the printed graphic panels onto the rods in the same order as shown here:

DesignSmart, BuiltSmart, EnergySmart, BudgetSmart

9**Twist Spacers Onto Rods**

Attach the spacers by simply screwing them on by hand.

10

Hang Clear Acrylic Lenses



Peel off one side of the protective layer from the acrylic lenses. Also peel off a small amount from the other side around each hole.

Next, hang the acrylic lens on the rods.

11

Secure Lenses with Screw Caps



Screw the caps on, and peel the last of the protective layer from the acrylic lens.

If you run out of room on the rod, simply screw or unscrew it to the desired length using a 5/32" allen wrench/bit.

12

Admiration for a job well done



Continue the process for each of the four graphics. Step back and admire your new feature wall.

NEED HELP?

Contact us at CMHMarket@HighResolutions.com for any of the below reasons:

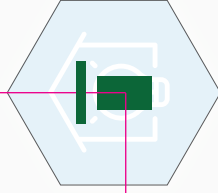
Missing Parts/Pieces

Broken/Damaged Graphics

Questions about Installation

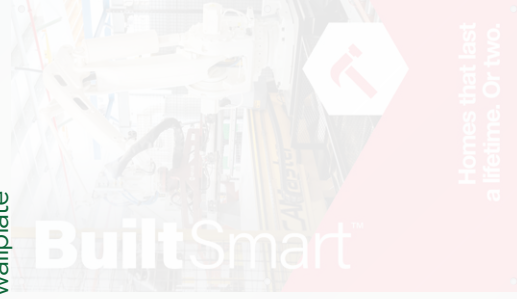
Center Outlet
48.25" From Left Wall

Center Outlet 13" From
Bottom of 6" Crown Moulding



Measurements based on
centering to standard outlet wallplate

HouseSmart



Total Wall Dimensions:
13' 6.5" (162.5") w x 9' (108") h

***Placement & measurements may vary in remodeled offices please contact Retail Marketing for updated measurements.**