



These instructions will walk you through how to install your Double Layer Graphics. Use this QR code to watch an installation video for these types of graphics.



- Drill
- 1/8" drill bit
- 5/32" Allen wrench/bit
- Level
- Measuring tape
- Masking or painters tape

***Placement & measurements may vary in remodeled offices please contact Retail Marketing for updated measurements.**

1

Position Template



Measure the width of your wall to find the center point. Position the template on the wall centered and reference the measurements above to see how far down from the crown moulding the graphic should be installed.

Once your template is in the right position, use masking or painters tape to secure it in place. Make sure template is flat against the wall.

2

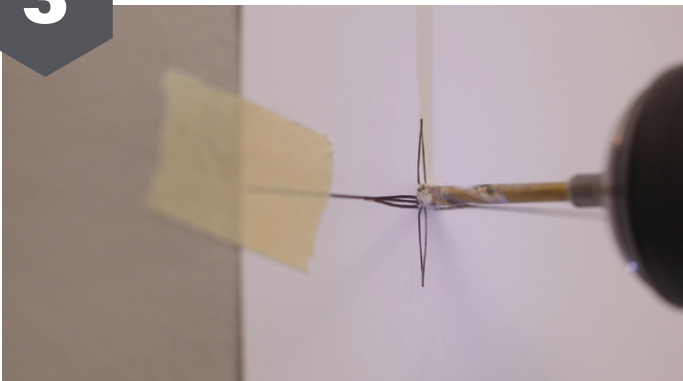
Confirm Template Position



With your template installed, step back and look things over before drilling any holes. If everything looks centered and level, gather your tools to complete the installation.

3

Drill Holes

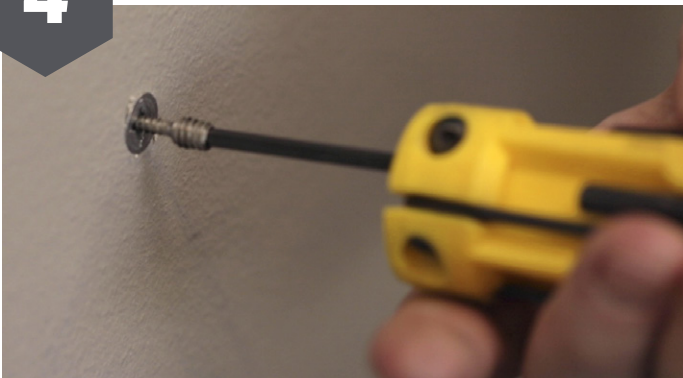


Starting with a 1/8" drill bit, pre-drill the holes at the center of each of the crosshairs on the graphic.

After all the holes are drilled, you can take down and discard the template.

4

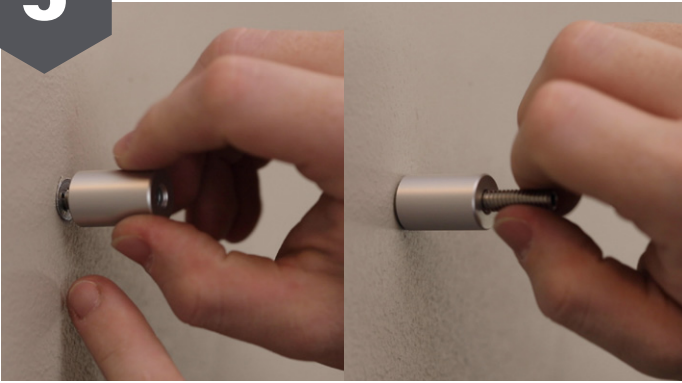
Install Wall Anchors & Screws



The holes you pre-drilled in the template will be used to attach aluminum stand-off hardware for these graphics.

Unless you're drilling into a wall stud, be sure to install the provided wall anchors into these pre-drilled holes. If drilling into a stud you'll be screwing the special-threaded rod screws directly into the wall and stud with a 5/32" Allen wrench.

Attach the special threaded rod screws to wall or the anchors using a 5/32" Allen bit .

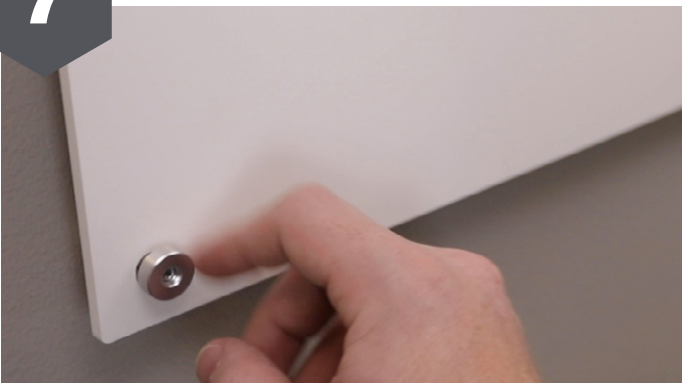
5**Install Barrels & Threaded Rods**

By hand, attach each barrel to the wall.

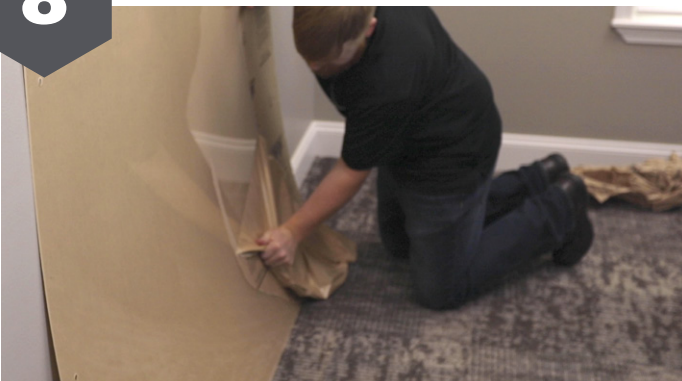
After all the barrels are installed, screw the additional threaded rod into the barrel. Leave about $\frac{5}{8}$ " sticking out.

6**Hang Printed Graphics**

Now hang the printed graphic panel onto the rods.

7**Twist Spacers Onto Rods**

Attach the spacers by simply screwing them on by hand.

8**Hang Clear Acrylic Lenses**

Peel off one side of the protective layer from the acrylic lens. Also peel off a small amount from the other side around each hole.

Next, hang the acrylic lens on the rods.

9

Secure Lenses with Screw Caps



Screw the caps on, and peel the last of the protective layer from the acrylic lens.

If you run out of room on the rod, simply screw or unscrew it to the desired length.

12

Admiration for a job well done



Step back and admire your graphic.

NEED HELP?

Contact us at CMHMarket@HighResolutions.com for any of the below reasons:

Missing Parts/Pieces

Broken/Damaged Graphics

Questions about Installation